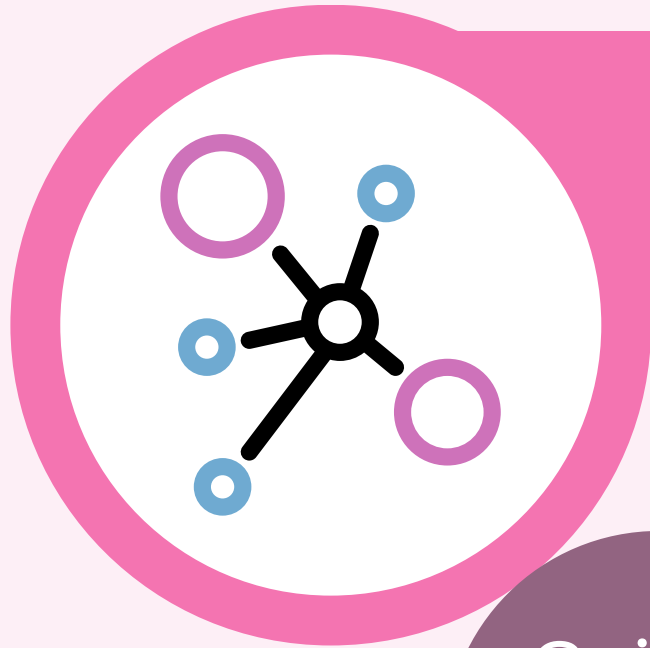


Gulf Coast Charter  
Academy South

**3RD GRADE**  
**PARENT NIGHT**



# OBJECTIVES



Gain access to resources to help your 3rd grade student succeed.

Understand the Florida 3rd Grade passing requirement

View your 3rd grade student's test data and work samples.



## TIP

By the end of grade 3, students are expected to be able to read independently. This means that they can read and understand words, sentences and paragraphs without help.



# MEET YOUR 3RD GRADE TEAM



**Ms. Roberts**  
3rd Grade  
Team Leader



**Ms. Siskin**  
3rd Grade  
Teacher



**Mr. Del Mazo**  
3rd Grade  
Teacher



**Mr. Fletcher**  
3rd Grade  
Teacher



**Ms. Quist**  
MTSS  
Teacher



**Ms. Biernacki**  
ESE  
Teacher



**Ms. Paz**  
ELL  
Coordinator



**Ms. Fletcher**  
Guidance  
Counselor



# FLORIDA'S LAW

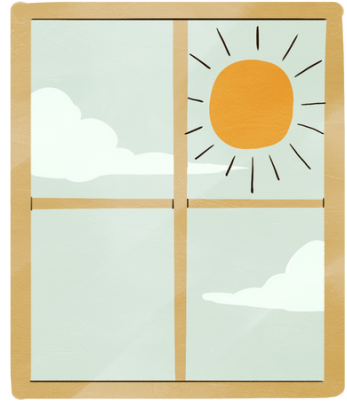
**Florida Statute 1008.28- Public school student progression; student support; coordinated screening and progress monitoring; reporting requirements.**

3rd graders who do not have a score of Level 2 or above on the statewide Florida Standards Assessment English Language Arts (FSA-ELA) must be retained (not promoted to grade 4).



## NOTES

- Children who demonstrate the required reading level through a state-approved alternative standardized reading test or through a student portfolio can be granted a good cause exemption and be promoted to grade 4.
- A student will only be retained in grade 3 one time.



# GOOD CAUSE EXEMPTIONS

- Students with limited English proficiency students who have had less than 2 years of instruction in an English for Speakers of Other Languages program
- Students who demonstrate an acceptable level of performance on an alternative standardized assessment
- A student who demonstrates proficiency through a student portfolio
- Students with a 504 or IEP who were already retained.
- Students who have received intensive reading instruction for 2 years and who were already retained.



## STRATEGIES

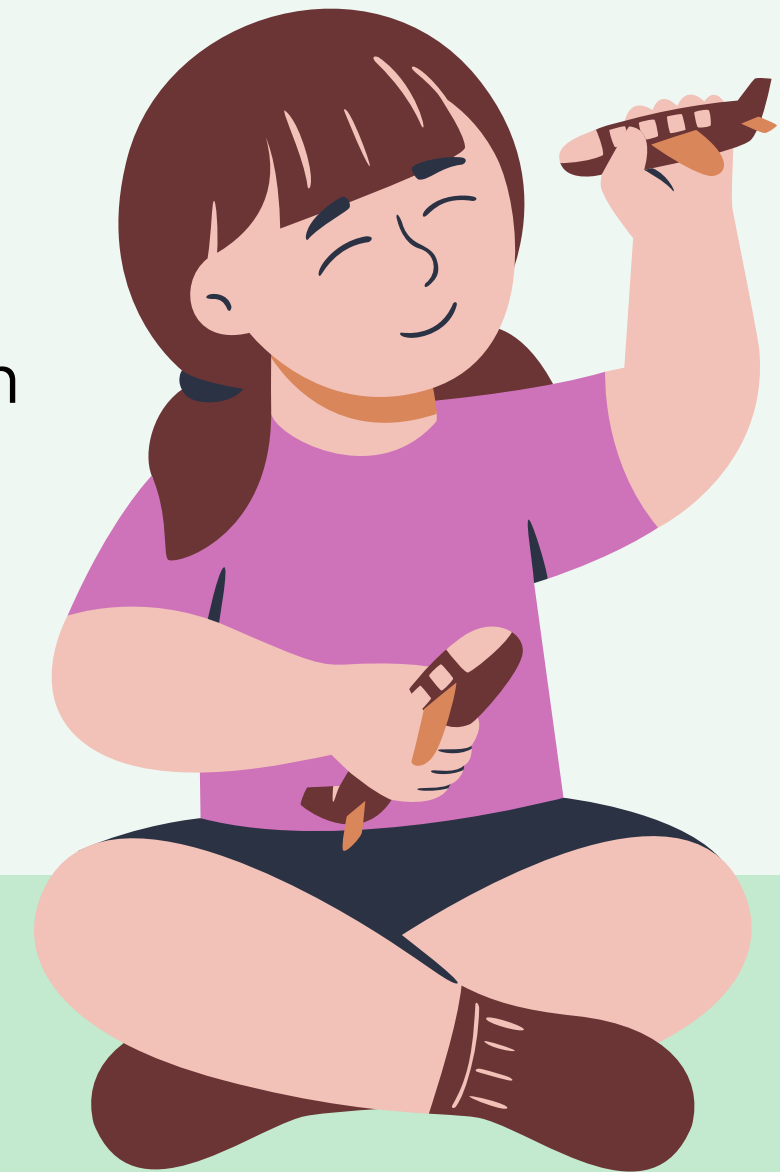
- Re-read slowly
- Look at pictures
- Use a dictionary.





## WHY 3RD GRADE?

- As students progress through the grades, the texts and tasks become more complex and difficult.
- Students who have who are not reading on grade level continue to fall more behind each year.
- This frustration and discouragement, along with deficits in ability leads to years of difficulty and results in limited opportunities.



### STRATEGY

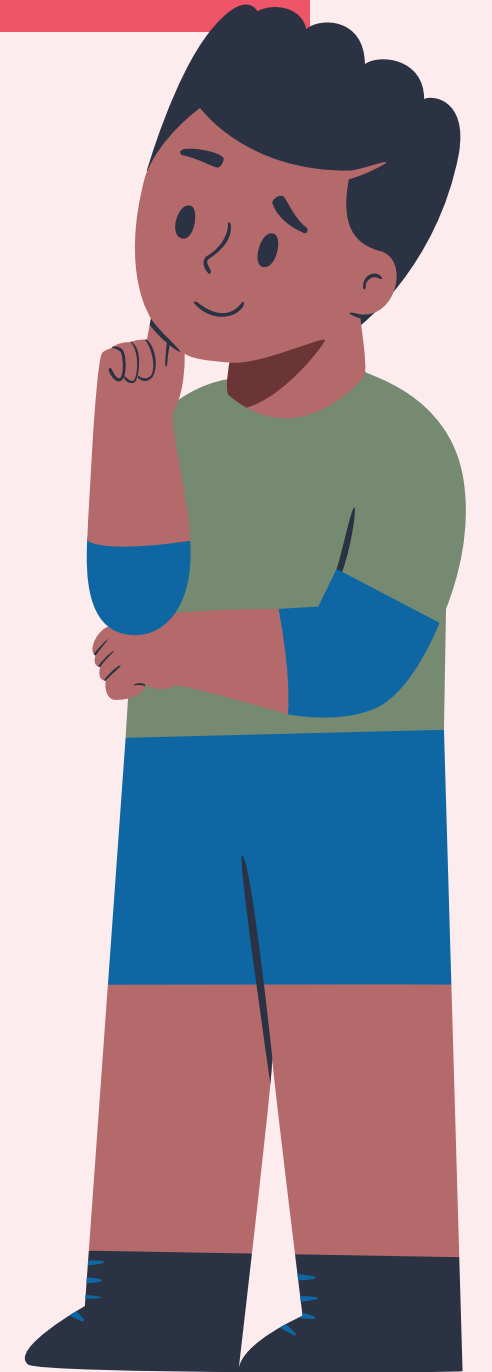
- Use words & clues from the story to create a picture in your mind.



# WHAT IS F.A.S.T. TESTING?

## Florida Assessment of Student Thinking

- Grades 3–5 FAST ELA Reading and grades 3–5 FAST Mathematics assessments are aligned to the Benchmarks for Excellent Student Thinking (B.E.S.T.) Standards.
- All FAST assessments are computer-adaptive, items may become progressively harder as students successfully respond to items and easier if students answer more questions incorrectly.
- FAST assessments are administered three times during each school year: once at the beginning of the year (PM1), once in the middle of the year (PM2), and once at the end of the year (PM3).
- Each PM assessment is tied to a blueprint for the full grade-level content.
- The ELA and Mathematics blueprints show how many items in each reporting category students will encounter during each PM window.



# PROGRESS MONITORING PERIODS



## PM 1

August-September

Provides a baseline score and informs teachers about most urgent topics to be taught

## PM 2

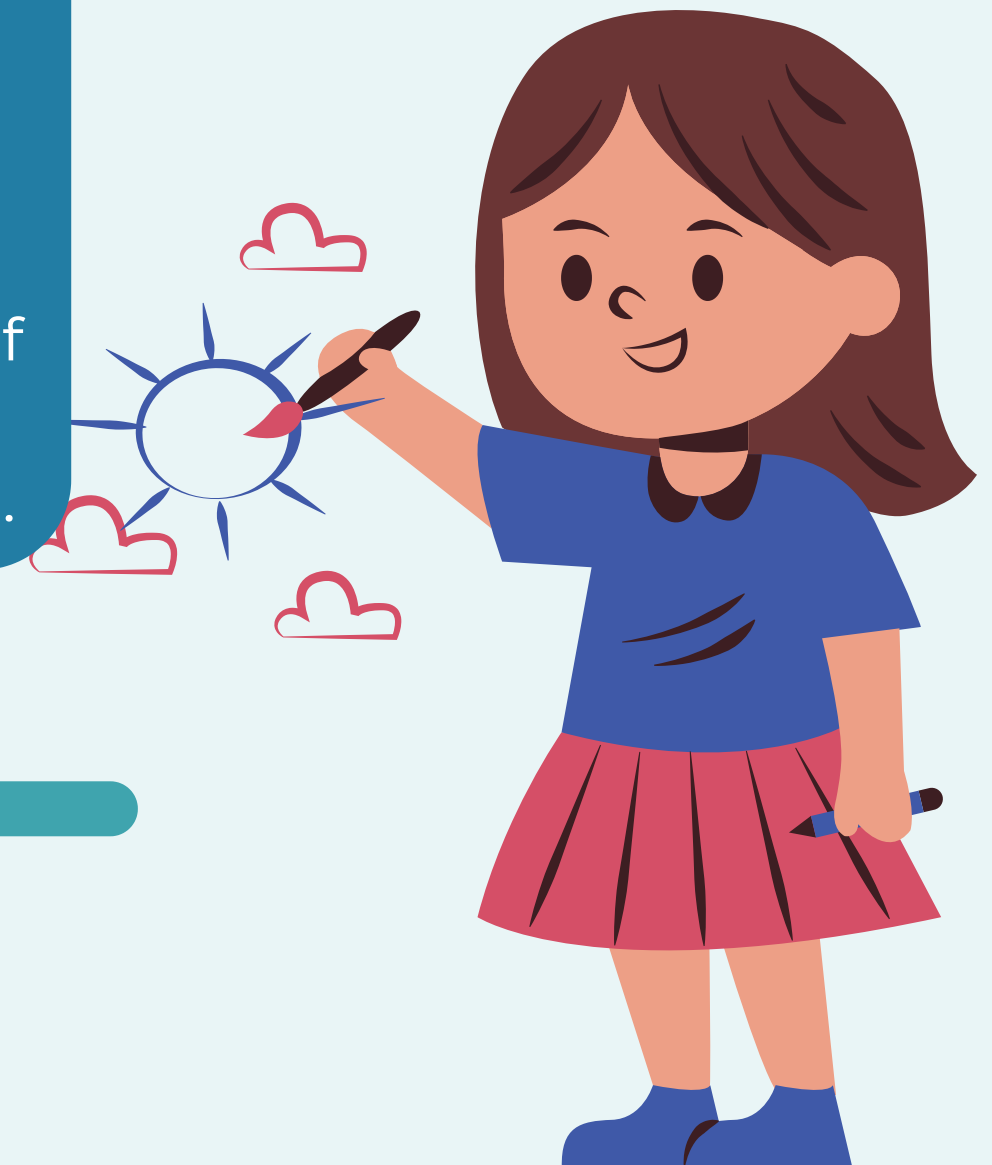
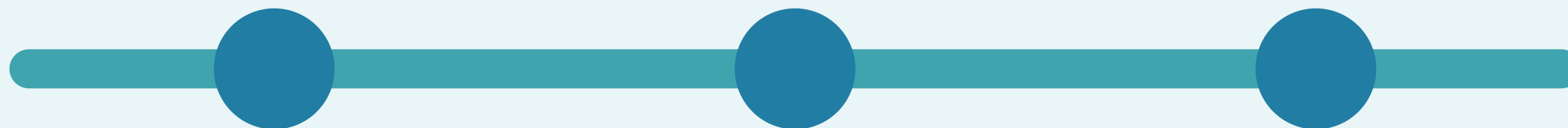
December-January

Provides information on how students are progressing and what they still need to learn

## PM 3

May

Provides a summative score that measures student mastery of the grade-level content standards.



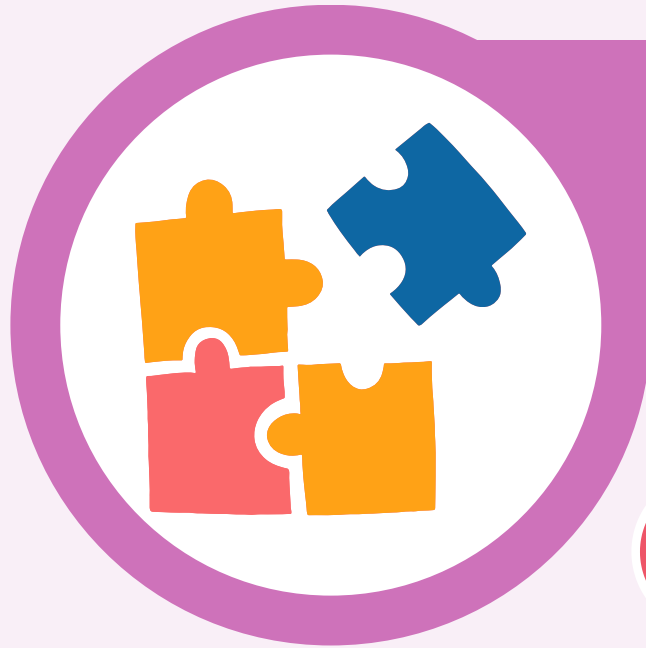




# TESTED BENCHMARKS

Reporting Category	Benchmarks Assessed		% of Test
Reading Prose and Poetry	Literary Elements	ELA.3.R.1.1	25-35%
	Theme	ELA.3.R.1.2	
	Perspective and Point of View	ELA.3.R.1.3	
	Poetry	ELA.3.R.1.4	
Reading Informational Text	Structure	ELA.3.R.2.1	25-35%
	Central Idea	ELA.3.R.2.2	
	Purpose and Perspective	ELA.3.R.2.3	
	Argument	ELA.3.R.2.4	
Reading Across Genres & Vocabulary	Interpreting Figurative Language	ELA.3.R.3.1	35-50%
	Paraphrasing and Summarizing	ELA.3.R.3.2	
	Comparative Reading	ELA.3.R.3.3	
	Morphology	ELA.3.V.1.2	
	Context and Connotation	ELA.3.V.1.3	
Total Number of Items			36-40





# FAST ACHIEVEMENT LEVELS



## Level 1

Scale score 140-185- Students in this range require substantial support to navigate grade level texts and tasks.

## Level 2

Scale score 186-200- Students in this range require moderate support to navigate grade level texts and tasks.

## Level 3

Scale score 201-212- Students in this range can approach grade level texts independently but still need additional support.

## Level 4

Scale score 213-224- Students in this range can read grade level texts independently and are likely to succeed in academic tasks.

## Level 5

Scale score 225-260- Students in this range can read above grade level texts independently and are likely to succeed in academic tasks.



# TIPS FOR STUDENTS

- Read each question carefully and read through all answer choices.
- Read and Annotate.
- Refer to the text to find the answers.
- Read everyday (20-30 minutes).
- Complete i-Ready.
- Complete ALL home learning assignments.



## STRATEGIES

- Look for the most important information in the story.
- Ask yourself, "What is the story mostly about?"
- Find the key points that tell you what happened in the story.
- Pay attention to the beginning, middle, and end of the story
- Think about the characters, setting, and events

# TIPS FOR PARENTS



- Ask questions about their reading.
- Encourage your child to read.
- Ask them to support their answers with evidence- always ask why.
- Remind students to complete i-Ready.
- Prioritize attendance.
- Read together as much as possible.



## SAMPLE TEST MATERIALS

Online STMs may be accessed through the FAST Portal at  
[https://login4.cambiumtds.com/student\\_core/V142/Pages/LoginShell.aspx?c=Florida\\_PT&a=Student](https://login4.cambiumtds.com/student_core/V142/Pages/LoginShell.aspx?c=Florida_PT&a=Student)





Everyone is invited to visit their child's classroom to see their work and test data.

For a personalized meeting with your child's teacher, please request a meeting time.

thank  
you ☆

